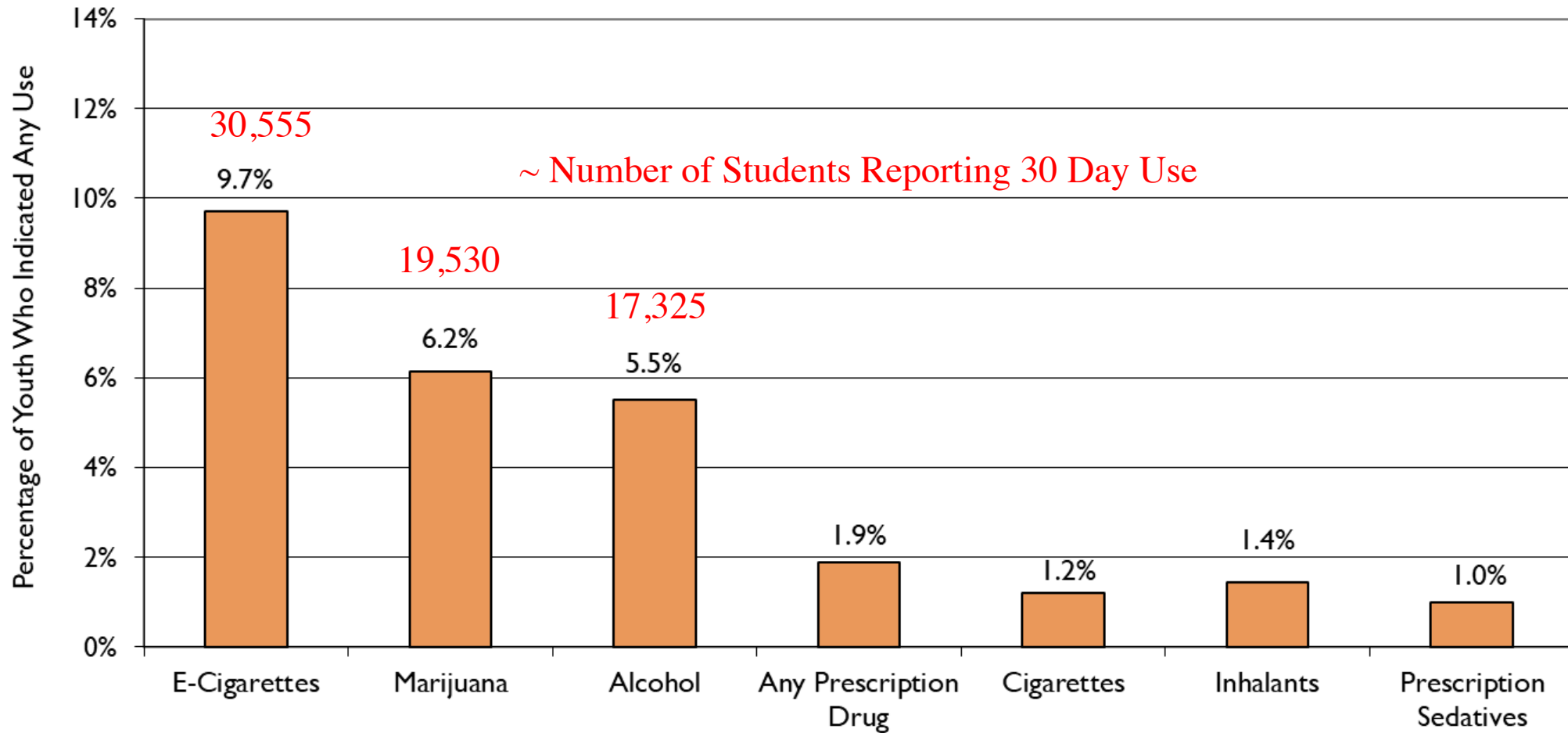


RESULTS FROM THE 2019 SHARP SURVEY

- The following is information taken from the 2019 SHARP (Student Health and Risk Prevention) statewide survey. This survey is administered every two years, to the students in grades 6, 8, 10, and 12 in most public and certain charter school districts across Utah.
- The first slide shows the number of students who report that they have engaged in certain behaviors during the prior 30 days.
- The next slide shows student responses to questions of social isolation.



Substances with the Highest 30 Day Youth Use Rates in Utah: Grades 6, 8, 10 and 12 Combined (2019)

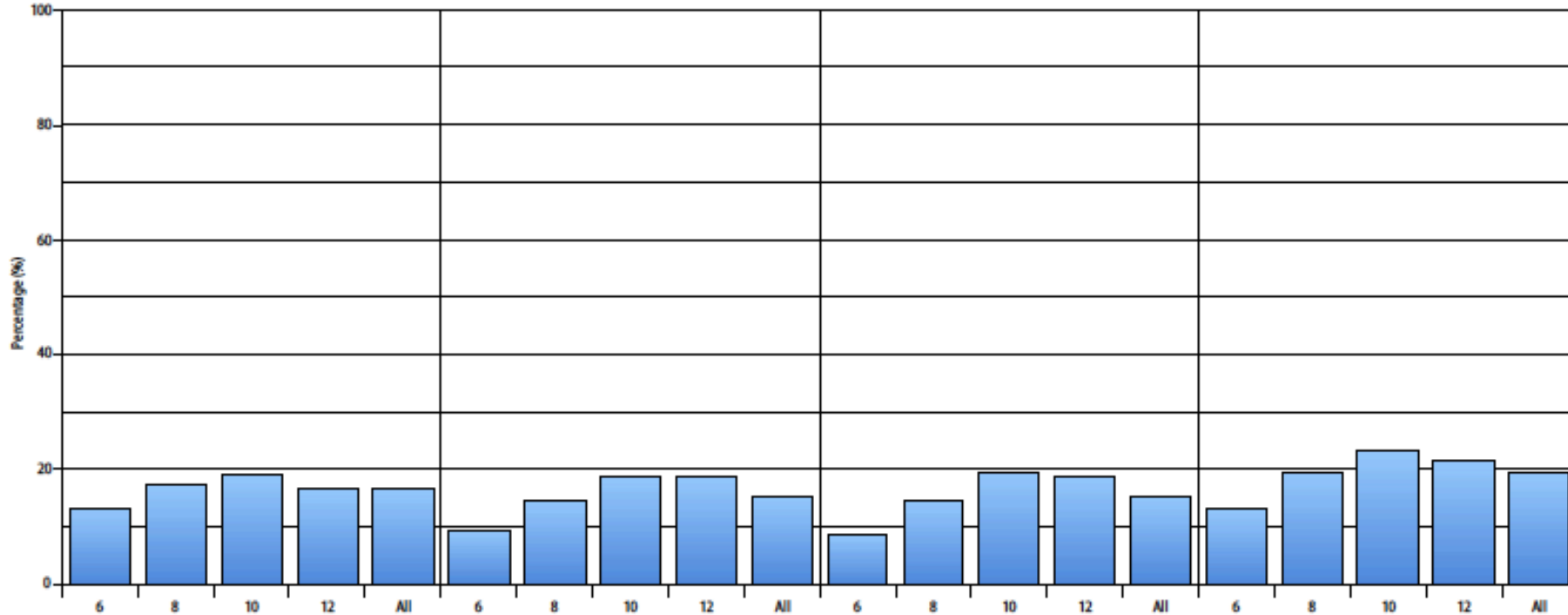


Grades K6 – K12 ~ 315,000 Students – assume same % K6 – K12





Social isolation State of Utah 2019 Student Survey



Grade	Students who reported during the past seven days "Often" or "Always"...			
	Felt left out.	Felt that people barely know me.	Felt isolated from others.	Felt that people are around me but not with me.
	State 2019	State 2019	State 2019	State 2019
6	13.1	9.5	8.8	13.1
8	17.1	14.7	14.6	19.6
10	19.0	18.7	19.4	23.3
12	16.4	18.5	18.7	21.7
All	16.4	15.3	15.3	19.4

State 2019

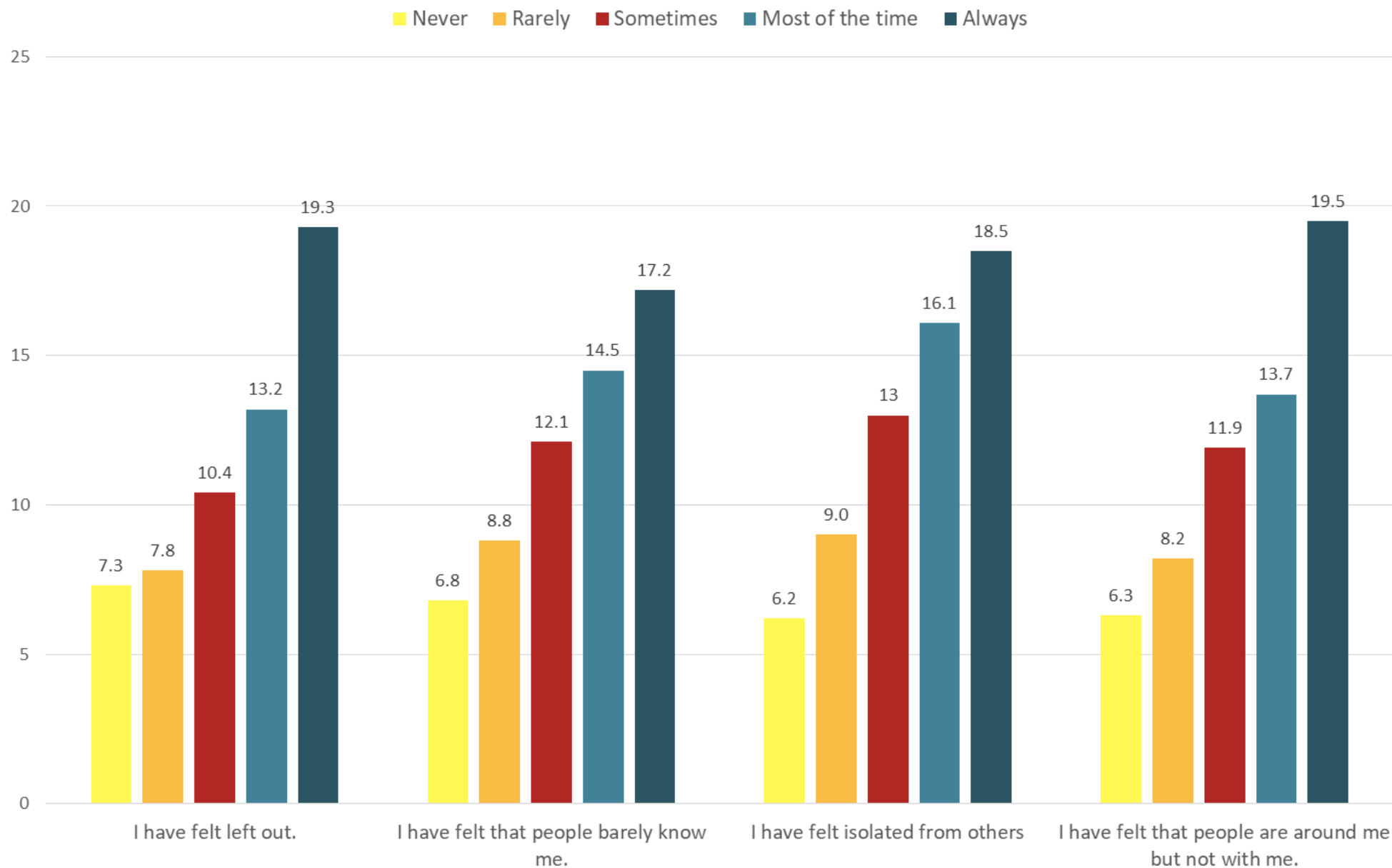


The next slide takes students who reported E-cigarette/vaping use in the last 30 days and looks at their responses to the social isolation questions. *The graph shows that students are over 3 times as likely to use E-cigarettes or vape when they feel socially isolated.*



30 Day E-Cigarette/Vape Use by Social Isolation Items

Of students indicating various degrees of social isolation (in the past 7 days), the percent indicating any use of e-cigarettes in the past 30 days.

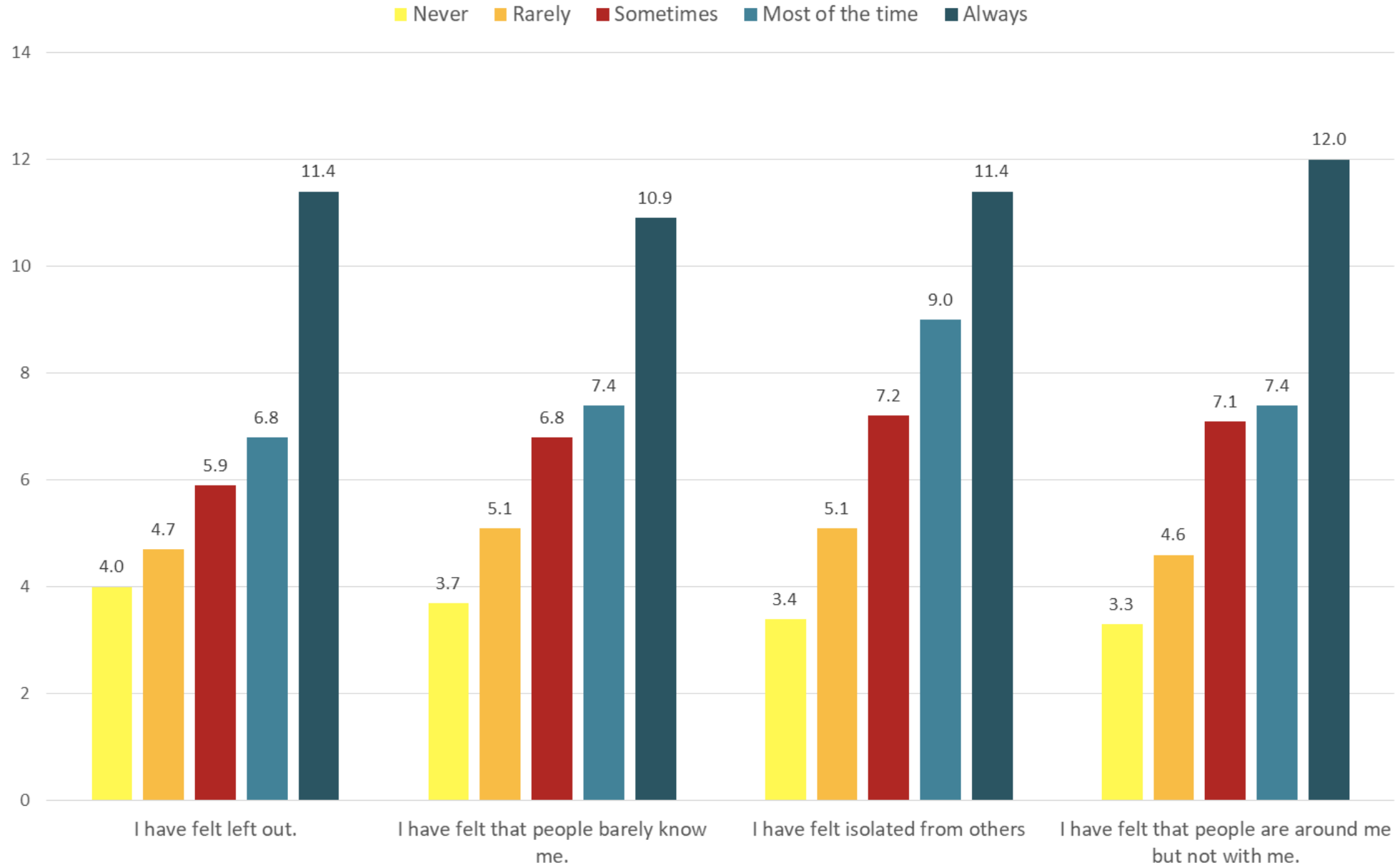


The next slide takes students who reported alcohol use in the prior 30 days and looks at their responses to the social isolation questions. *The graph shows that students are up to 4 times more likely to use alcohol when they feel socially isolated.*



30 Day Alcohol Use by Social Isolation Items

Of students indicating various degrees of social isolation (in the past 7 days), the percent indicating any use of alcohol in the past 30 days.



The last slide takes students who have had suicidal thoughts during the last 30 days and looks at their responses to the social isolation questions. *The graph shows that students are up to 10 times more likely to have suicidal thoughts when they feel socially isolated.*



Suicide Consideration by Social Isolation Items

Of students indicating various degrees of social isolation, the percent indicating considering suicide in the past year.

(For example, of students indicating they "Never" have felt left out, 5% indicated pas

